

# arauco

## MELAMINA

## Dynamic decors

### FOR ENDLESS INTERIOR DESIGNS

ARAUCO Melamina boards produced in Mexico have the quality and versatility for applications in any type of carpentry, interior design and architecture projects.

- GREAT VARIETY OF DECORS AND TEXTURES
- PRODUCT WITH ANTIVIRAL AND ANTIBACTERIAL PROTECTION\*
- INDOOR USE PRODUCTS

\* Check with your distributor the availability of designs that have this antimicrobial protection.

[www.arauco.com](http://www.arauco.com)



carbon neutral

arauco

[www.arauco.com](http://www.arauco.com)

## FEATURES

- PBO, PBO MR and MDF board with decorative surface impregnated with melamine resin.
- Homogeneous and durable surface.
- Ideal for furniture manufacturing and carpentry for indoor applications.
- Available in a wide range of colors, decors and textures that bring style for unique spaces.
- Copper protection that eliminates up to 99.9% of viruses and bacteria in 24 hours.\*

## MAIN APPLICATIONS

- Residential casework, fixture fabrication, and architecturally-specified interiors. It is suitable for vertical and low-impact horizontal applications.

## RECOMMENDATIONS

- Product for indoor use.
- To cut, use widia (tungsten carbide) cutting disk with a minimum of 60 teeth of the hollow or trapezoidal chest type.

- For better cutting results use the double sided melamine blade.
- To apply screws properly it is important to pre-drill.
- Protect the edges from moisture applying either PVC, ABS, melamine edge banding or moulding on all edges of the piece.
- For humid areas and environments, the use of Moisture Resistant PBO boards is recommended.

## STORAGE

- Store the boards in horizontally, raised from the floor with supports spaced no more than 80 cm. If stored vertically, do it in a small number, securing the boards in their position.
- Store indoors in cool and dry places, not exposed to the sun.

\* Check with your distributor the availability of designs that have this antimicrobial protection.

## TECHNICAL SPECIFICATIONS

Product	Dimensions			Density average kg/m <sup>3</sup>	Tolerances			
	thickness mm	length m	width m		thickness mm	length mm	width mm	diagonal mm
ARAUCO Melamina PBO*	16 - 19	2.44	1.22	660 - 700	-/+0.2	-/+2	-/+2	-/+2
	28	2.44	1.22	630 - 670	-/+0.2	-/+2	-/+2	-/+2
ARAUCO Melamina PBO MR*	16 - 19	2.44	1.22	700 - 740	-/+0.2	-/+2	-/+2	-/+2
	28	2.44	1.22	670 - 710	-/+0.2	-/+2	-/+2	-/+2
ARAUCO Melamina MDF*	5.5	2.44	1.22	810 - 850	-/+0.2	-/+2	-/+2	-/+2
	9	2.44	1.22	615 - 665	-/+0.2	-/+2	-/+2	-/+2
	12 - 15 - 18 - 25	2.44	1.22	595 - 645	-/+0.2	-/+2	-/+2	-/+2

\*Note: Melamine boards in substrate PBO, PBO MR and 1-sided MDF non-slip design, tend to present a buckling by nature of the product. This is not considered a quality defect and is not treated as a claim. For more information consult your Sales Executive or Preferred Distributor.

## ABRASION RESISTANCE

Test results	Description
Minimum 500 cycles single-colored boards	The test ends by completely wearing down the melamine paper and reaching the substrate.
Minimum 150 cycle boards with design	The test ends when the printed design wears down and disappears in the upper relief of the board texture.

Note: Results obtained from tests under the UNE 7265 Standard, performed with a Taber® Abraser.

## PHYSICAL-MECHANICAL PROPERTIES

Property	Unit	Substrate thicknesses							
		PBO		PBO MR		MDF			
		16 - 19 mm	28 mm	16 - 19 mm	28 mm	5.5 mm	9 mm	12 - 15 - 18 - 25 mm	
Tensile strength	N/mm <sup>2</sup>	0.35	0.30	0.48	0.35	1.00	0.80	0.70	
Flexural strength	N/mm <sup>2</sup>	11	9	12	10	30	29	27 - 28	
Screw retention	(Face)	N	700	700	800	700	N/A	N/A	1,100
	(Side)	N	800	800	900	800	N/A	N/A	850

Measurements and technical characteristics may be modified without prior notice.

# arauco

## MELAMINA

First Melamine Laminate Board (TFL) made in Mexico with antiviral and antibacterial copper protection.\*

### ACCESSORIES

- **Edge banding:** All ARAUCO Melamina decors have a edge banding match with variety of vendors. For more information visit: [www.arauco.com](http://www.arauco.com)

\* Check with your distributor the availability of designs that have this antimicrobial protection.



Chardonnay



Latte



Rioja



Dakota



Niquel



Zafiro



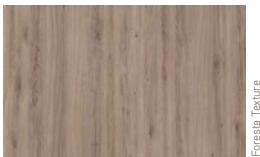
Jade



Laricina Siberia



Encino Polar



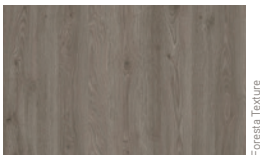
Roble Santana



Nogal Urbano



Precompuesto Ceniza



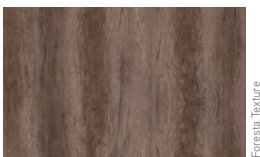
Fresno Bruma



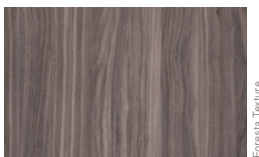
Monarca



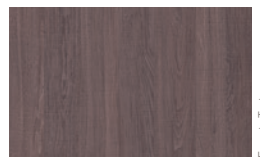
Roble Mérida



Nebraska



Nogal Neo



Roble Tabaco

Measurements and technical characteristics may be modified without prior notice.

[www.arauco.com](http://www.arauco.com)

**arauco**  
MELAMINA

3968-ENERO 21



Foresta Texture

Nogal Británico



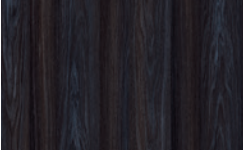
Foresta Texture

Durango



Mate Texture

Wengué



Foresta Texture

Anáhuac



Foresta Texture

Ébano Índi



Mate Texture

Oyamel



Mate Texture

Cerezo Premium



Mate Texture

Cerezo



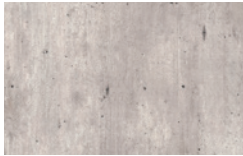
Mate Texture

Caoba



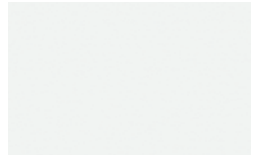
Textil Texture

Cairo



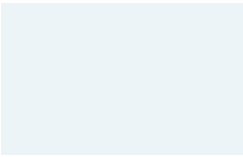
Materia Texture

Metropolitan



Mate Texture

Blanco Absoluto



Mate Texture

Blanco Frosty



Mate Texture

Gris Claro



Mate Texture

Gris



Mate Texture

Oxford



Mate Texture

Negro



Mate Texture

Visón



Mate Texture

Rojo Colonial

Nota: Products available upon request with TSCA emissions and FSC certification.



Measurements and technical characteristics may be modified without prior notice.